



GA12YN20/GA12YN30

DC Gear Motors

代表的用途：电子锁

Electronic lock

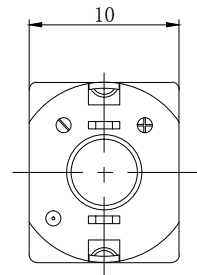
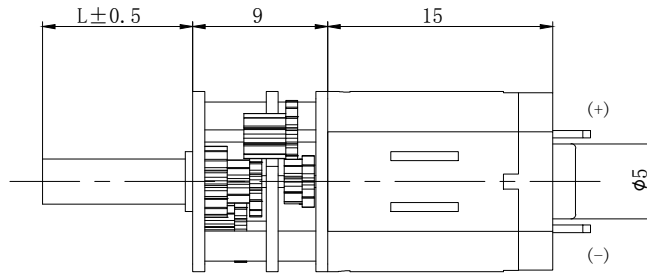
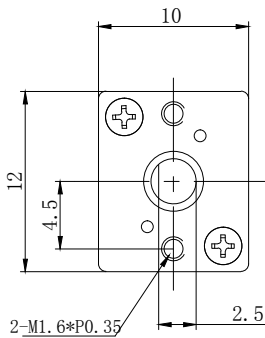
型号 (MODEL) : GA12YN20



MODEL	VOLTAGE		NO LOAD		AT MAXIMUM EFFICIENCY			STALL	
	OPERATING RANGE	NOMINAL	SPEED	CURRENT	SPEED	CURRENT	TORQUE	TORQUE	
			r/min	A	r/min	A	N. m	Kgf. cm	N. m
GA12YN20-09220-50	2-5V	5.0V	285	0.04	240	0.15	0.007	0.39	0.038
GA12YN20-09220-100	2-5V	5.0V	145	0.04	120	0.15	0.015	0.78	0.076
GA12YN20-09220-298	2-5V	5.0V	50	0.04	40	0.15	0.045	2.1	0.20

UNIT: MILLIMETERS

WEIGHT: 12g (APPROX)



型号 (MODEL) : GA12YN30



MODEL	VOLTAGE		NO LOAD		AT MAXIMUM EFFICIENCY			STALL	
	OPERATING RANGE	NOMINAL	SPEED	CURRENT	SPEED	CURRENT	TORQUE	TORQUE	
			r/min	A	r/min	A	N. m	Kgf. cm	N. m
GA12YN30-09190-100	3-9V	6.0V	125	0.03	105	0.09	0.02	1.2	0.12
GA12YN30-09160-298	3-9V	6.0V	42	0.03	35	0.09	0.05	2.5	0.25
GA12YN30-09190-390	3-9V	6.0V	33	0.03	28	0.09	0.05	2.5	0.25

UNIT: MILLIMETERS

WEIGHT: 13g (APPROX)

